

# *Point William*

- SMITH LAKE -

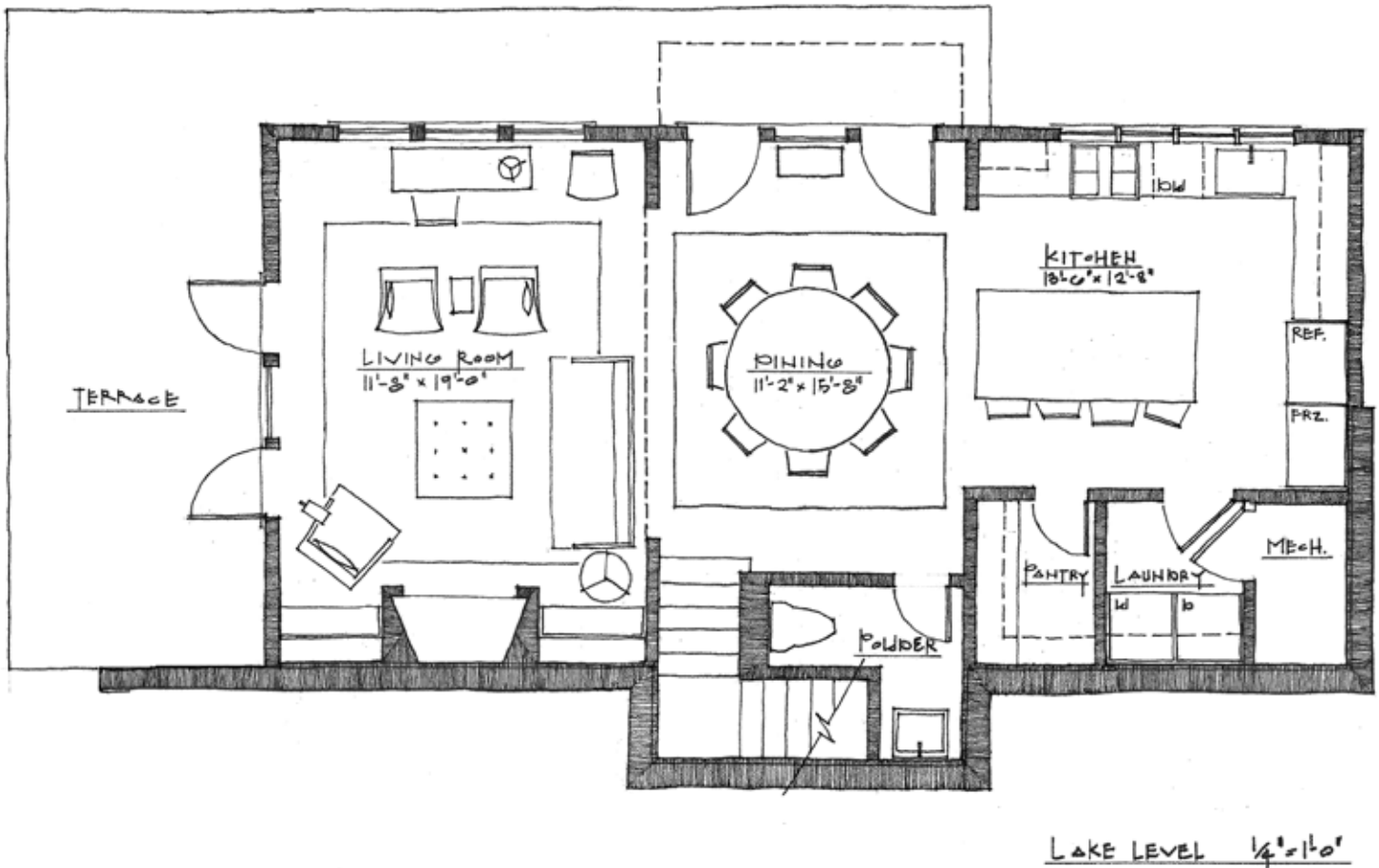


## PLAN G

5 Bedrooms / 4.5 Bath + Bunk Space

# Point William

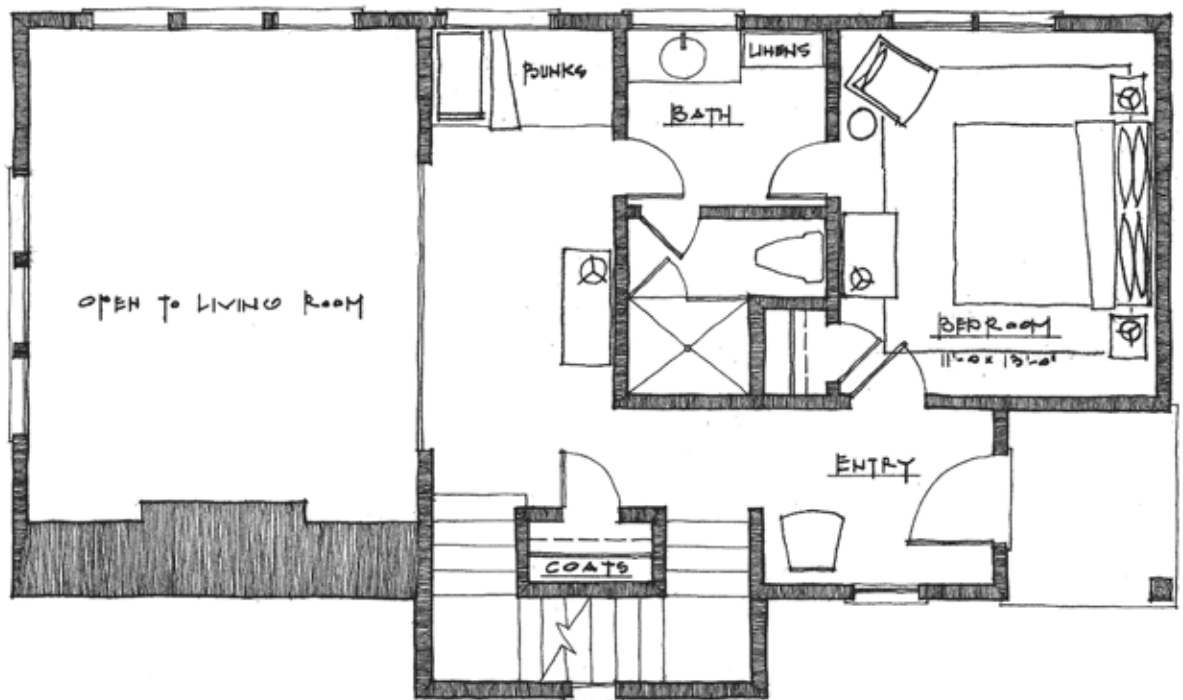
- SMITH LAKE -



LAKE LEVEL

# Point William

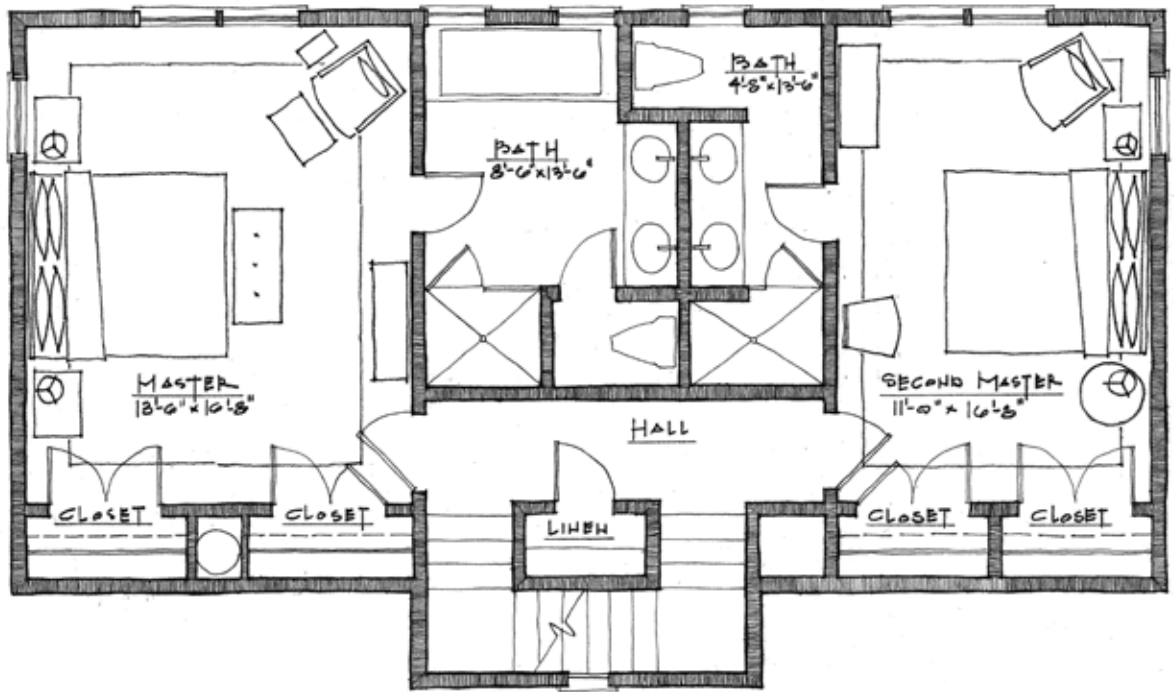
- SMITH LAKE -



## LANE LEVEL

# Point William

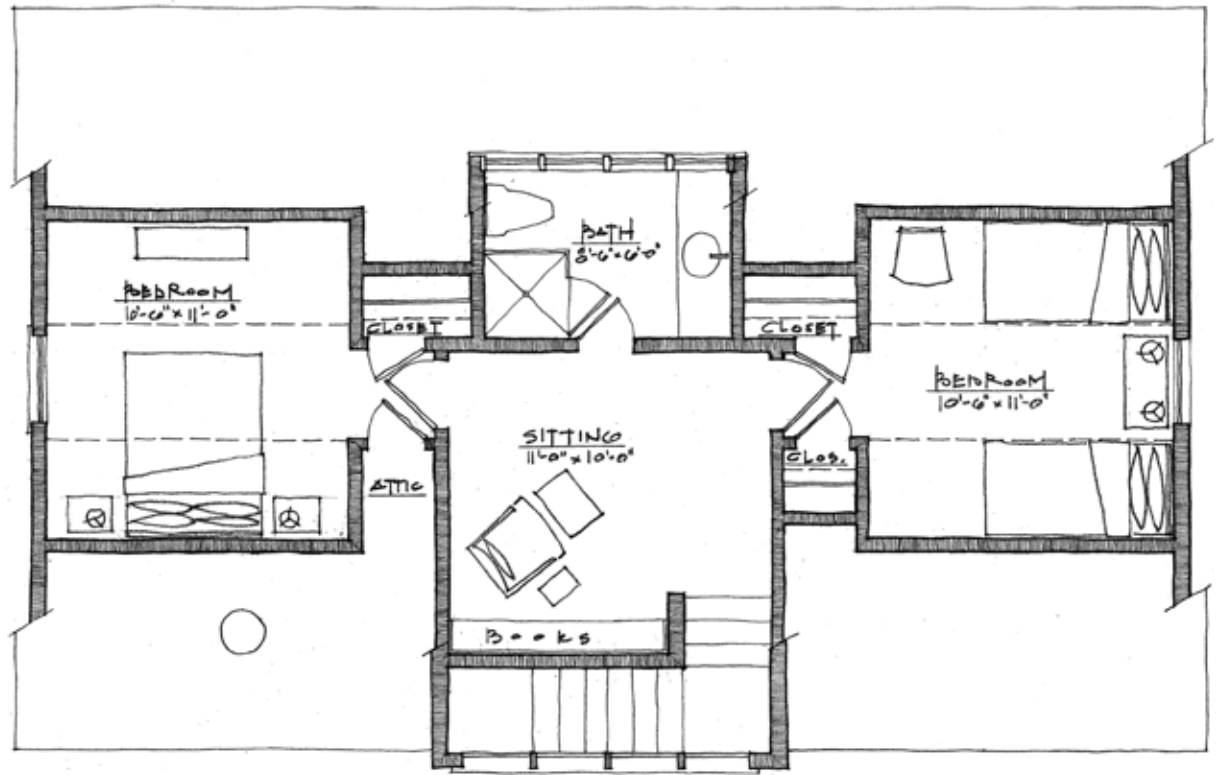
- SMITH LAKE -



## BEDROOM LEVEL

# Point William

- SMITH LAKE -



## UPPER LEVEL

# Point William

- SMITH LAKE -



## From Birmingham

1. Take I-65 North to **Exit 299** (Dodge City) and turn **left on AL-69**.
2. Go 7.4 miles and turn **right on County Road 222**.
3. Go 10.6 miles and turn **left on County Road 933**.
4. Go Approximately 1 mile and turn **right onto Point William Trail**.
5. Travel approximately .75 mile down Point William Trail and **you have arrived at Point William**.

## From Huntsville

1. Take I-65 South to **Exit 304** (AL-69 / Good Hope) and turn **left on AL-69**.
2. Go 1.4 miles and turn **left on County Road 222**.
3. Go 17.8 miles and turn **right on County Road 933**.
4. Go Approximately 1 mile and turn right onto **Point William Trail**.
5. Travel approximately .75 mile down Point William Trail and **you have arrived at Point William**.